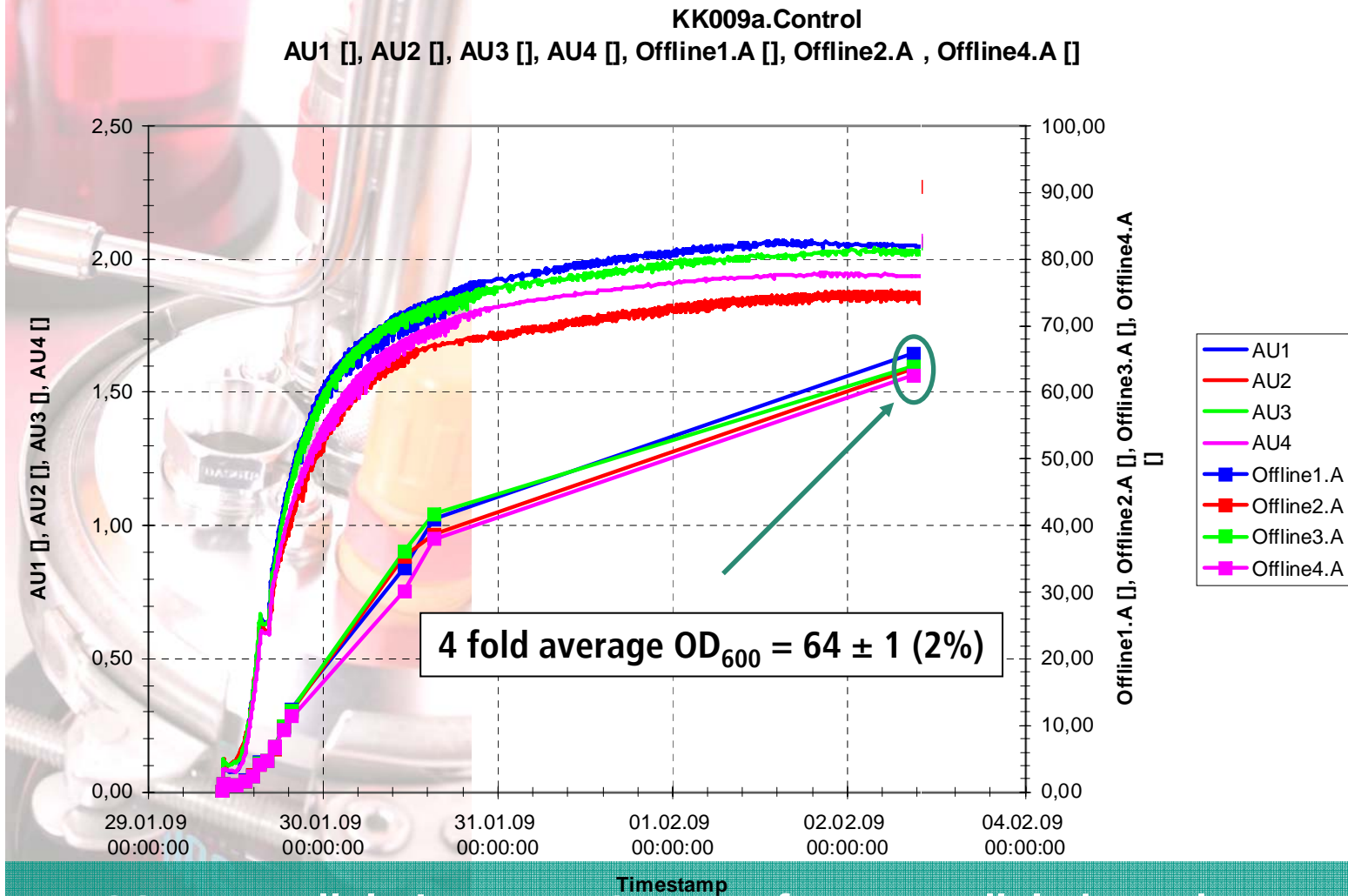


# *E. coli* K12: parallel biomass formation

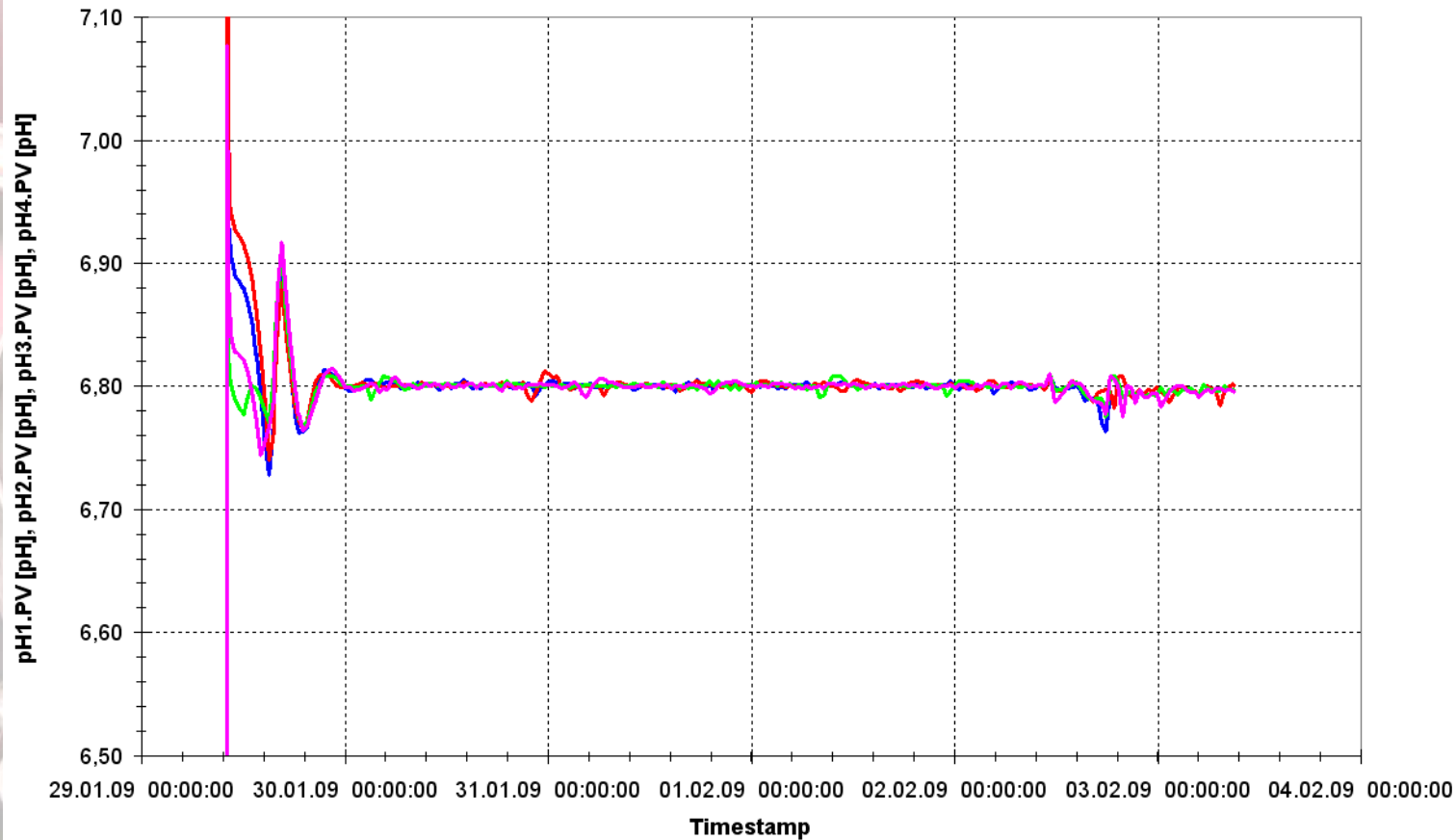


**DASGIP - Parallel Bioreactor Systems for Unparalleled Results.**

# *E. coli* K12: Parallel pH-control

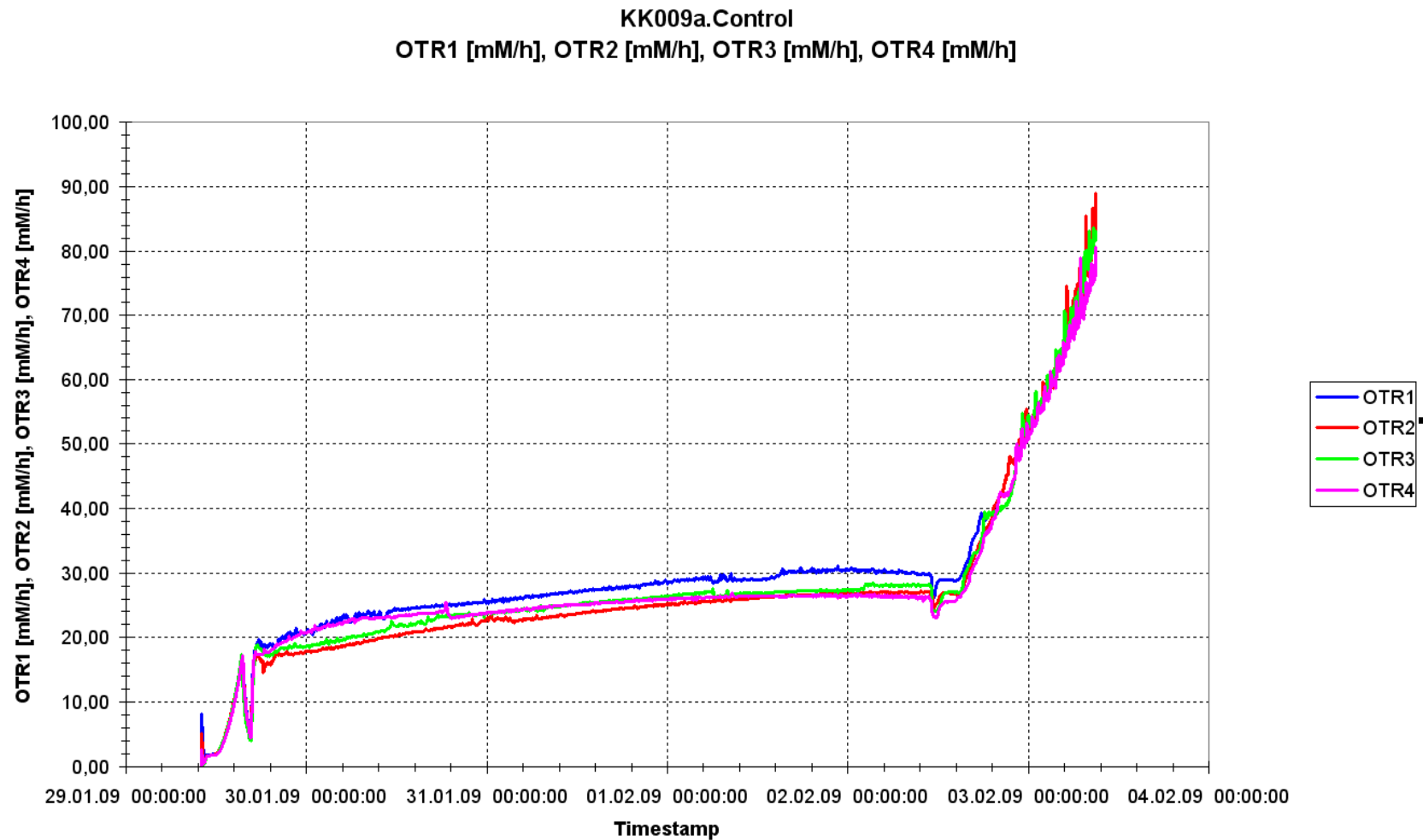
KK009a.Control  
pH1.PV [pH], pH2.PV [pH], pH3.PV [pH], pH4.PV [pH]

Diagrammfläche



DASGIP - Parallel Bioreactor Systems for Unparalleled Results.

# *E. coli* K12: parallel OTR-Data



DASGIP - Parallel Bioreactor Systems for Unparalleled Results.